

Version No.: V-241114A



**2024**  
PRODUCT  
CATALOGUE

## 3D DEPTH CAMERAS BASED on ToF TECHNOLOGY



**Website:** [www.vzense.com](http://www.vzense.com) **E-mail:** [vzense@goermicro.com](mailto:vzense@goermicro.com) / [lynn.fan@goermicro.com](mailto:lynn.fan@goermicro.com)  
**Tel:** 0086-17685764249 Davions Gao  
**Address:** Building F, Phase II, Qingdao International Innovation Park, No.1  
Keyuan Weiyi Road, Laoshan District, Qingdao City, Shandong Province, China

**Goermicro**  
**Vzense**



## About Goermicro

### A Leading Technology Company in MEMS

Established in October 2017, Goertek Microelectronics (Goermicro) is a subsidiary of Goertek Inc., specializing in the research, development, and manufacturing of high-precision electronic components and microelectronic devices. Now it is capable of providing customers with one-stop product solutions of "chip + device + module".

8%

R&D investment accounts for 8% of revenue

1800+

more than 1800 granted patents

2200+

The number of employees

## Team Development

### MILESTONES

**2016**

At a well-known VR company worldwide, we began evaluating 3D sensors, eventually selected the ToF sensor and began research and developing

**2017**

Released ToF modules DCAM100 and DCAM710, announced SDK and graphical tools

**2019**

Supported over 400 developers, conducted evaluations and development, and completed custom development for over 10 projects

**2020**

Our products began to Transform to professional and systematic ones

**2022**

Industrial grade products development completed and put into test in the field

**2023**

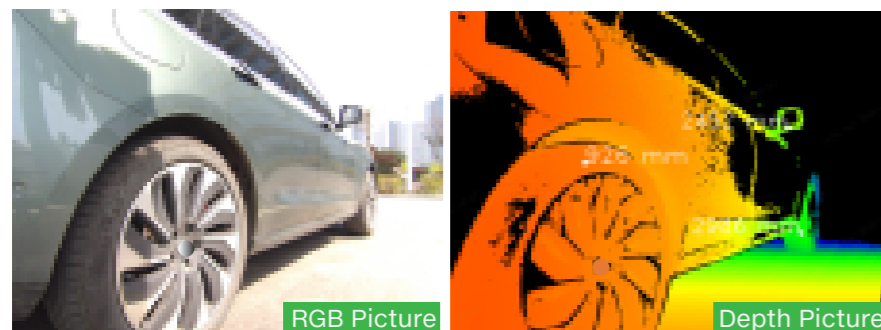
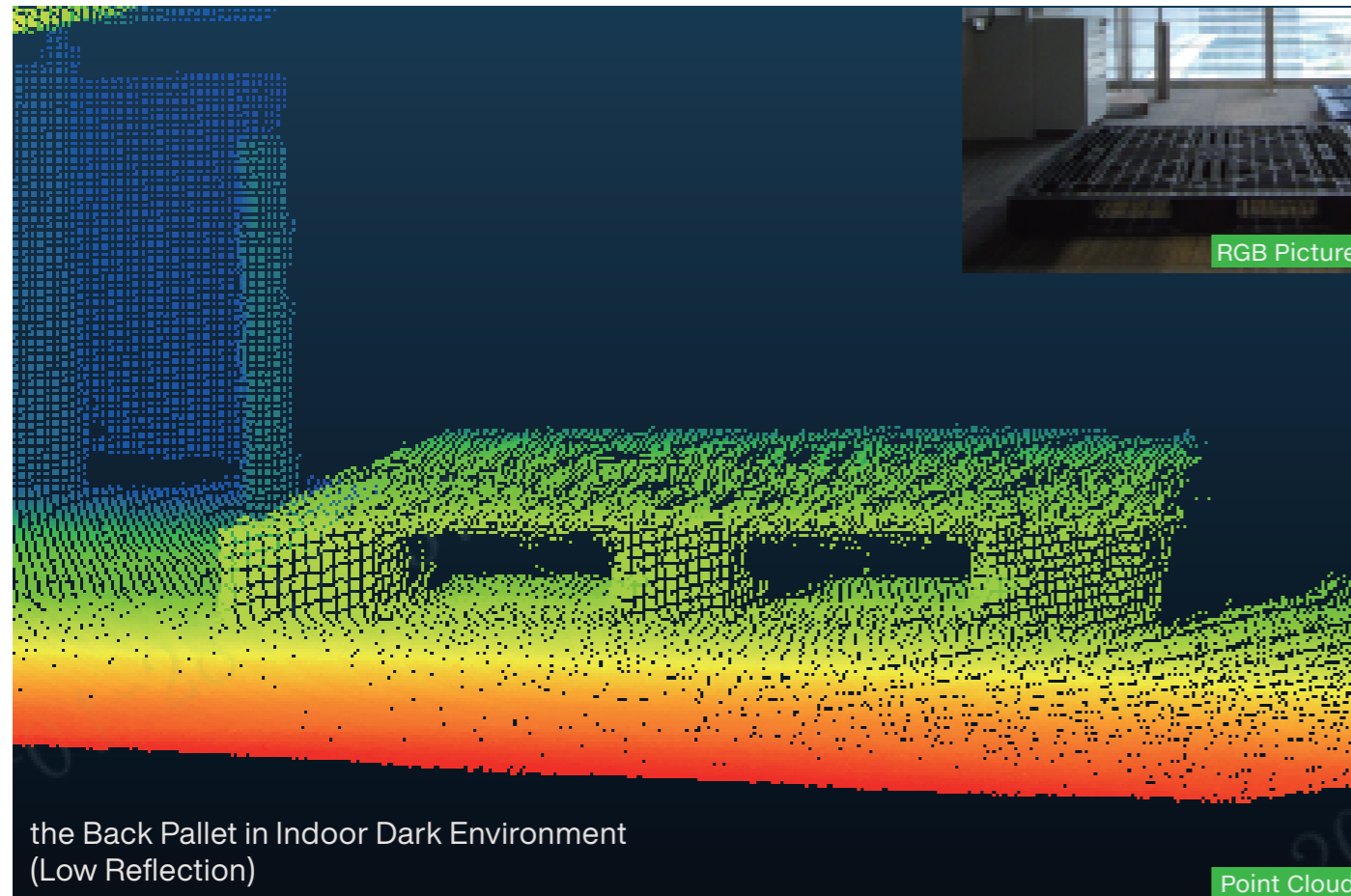
Receiving positive feedback from industrial-oriented customers and realizing revenues

- 7 years R&D experience in TOF Technology
- Over 10 designed independently & mass produced TOF products
- Dozens of TOF technology related patents
- Independently developed TOF products for fast calibration
- Strong TOF module customization ability for quick delivery.



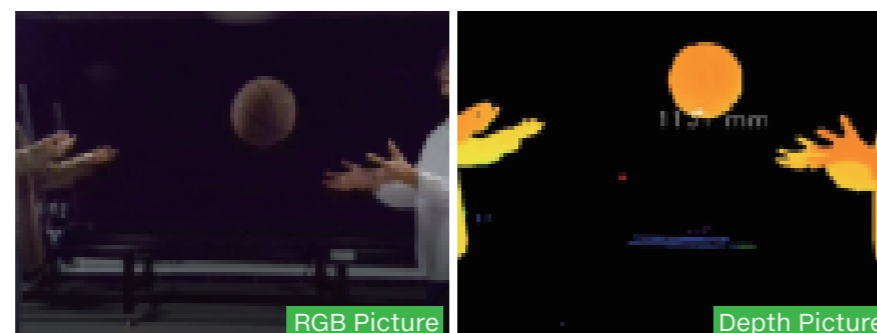
## Product Strength

‘Outstanding’,  
anywhere,  
anytime!

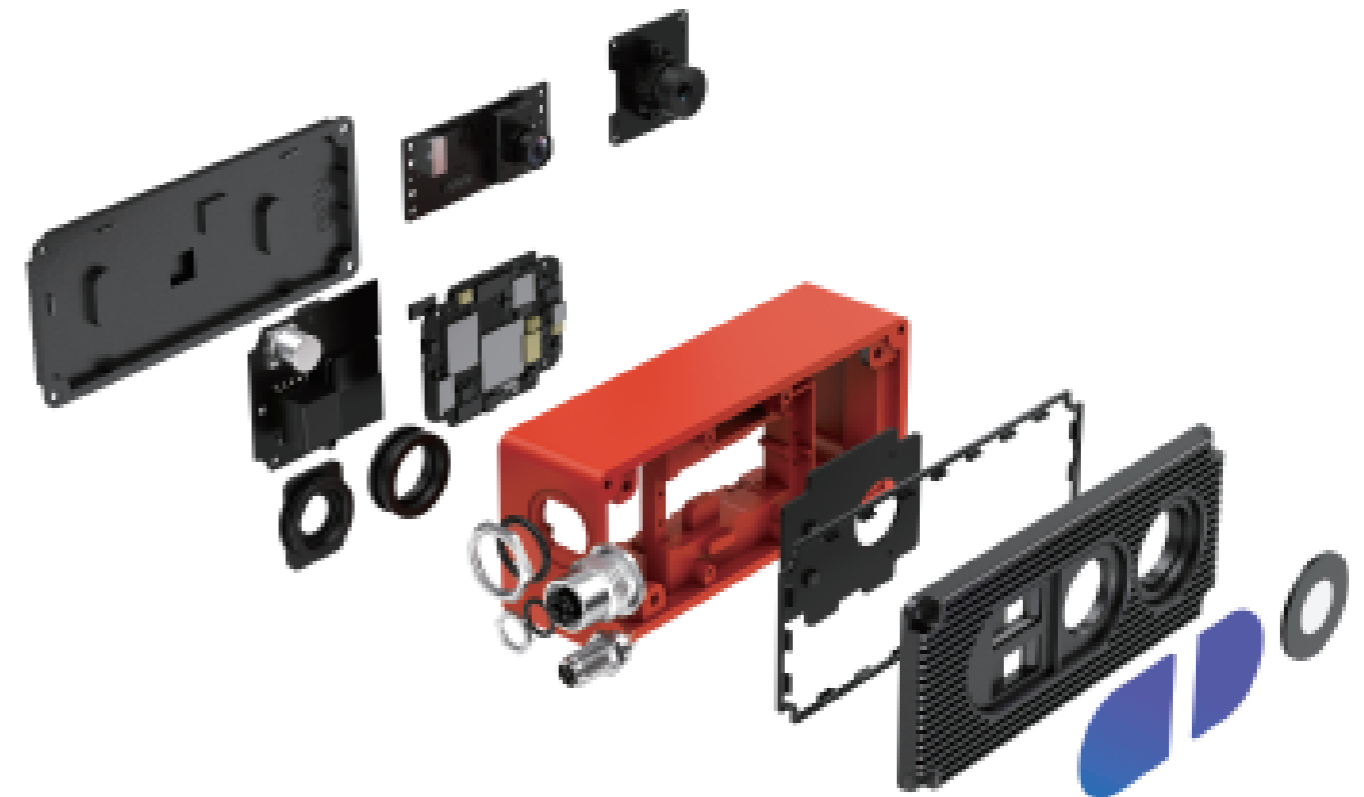


the Nice Painted Car Outdoor  
(High Reflection)

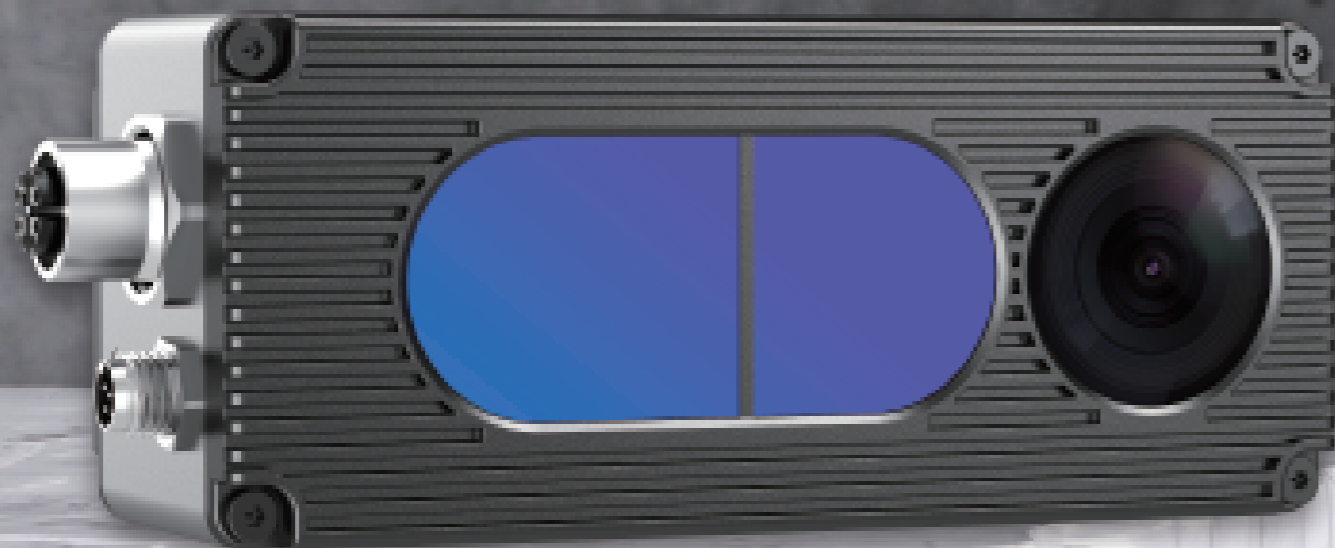
Fast throwing a ball indoor  
(Low Reflection& High Speed)



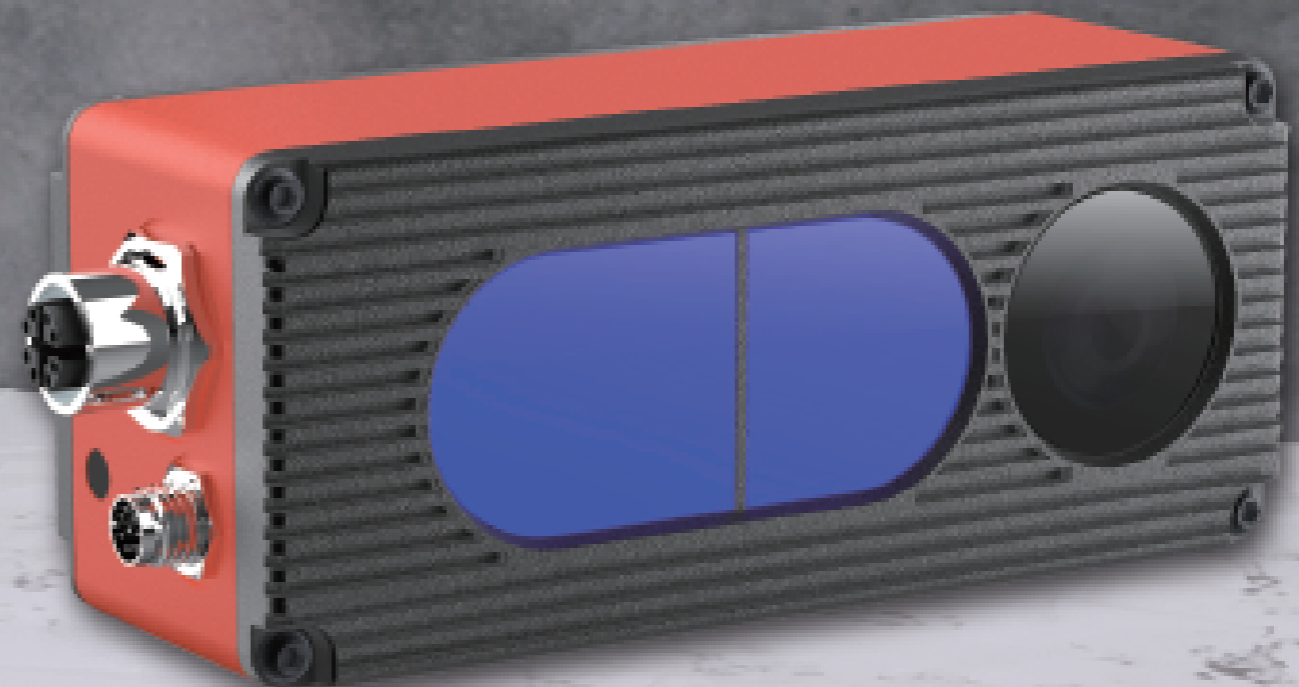
‘High Cost Performance’  
from the inside-out



- TOP SENSOR (SONY& NUVOTON)
- TOP ILLUMINATION (LUMENTUM)
- GLOBAL SHUTTER RGB CAMERA
- GaN DRIVED CHIPS
- INDUSTRIAL LENS
- STABLE SDK SUPPORT

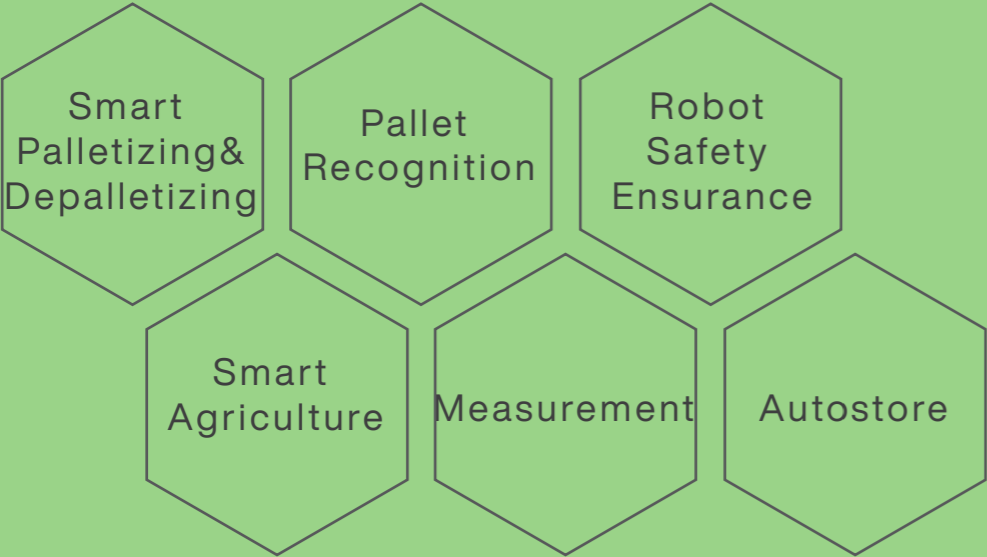


**NYX SERIES**  
Based on Pulse iToF

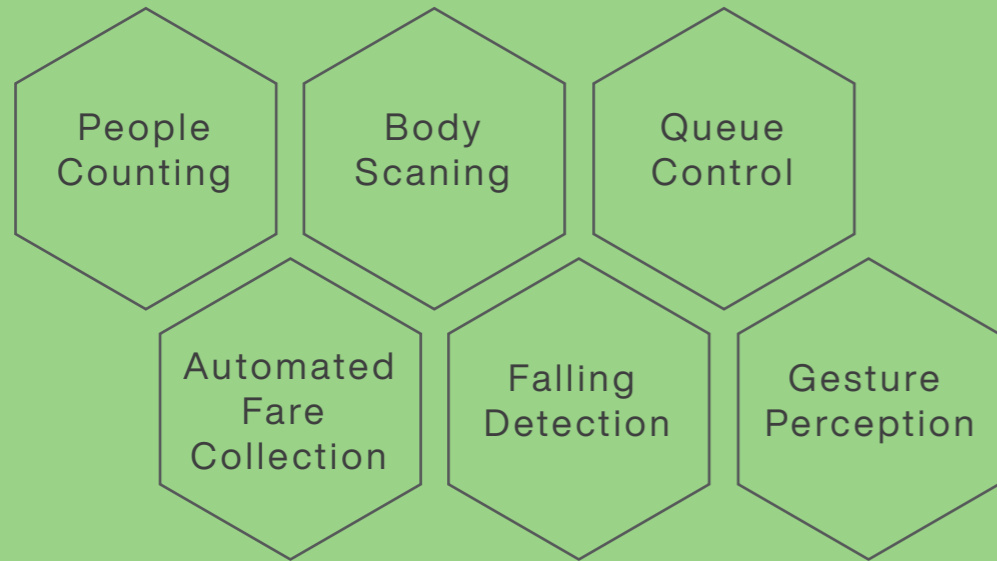


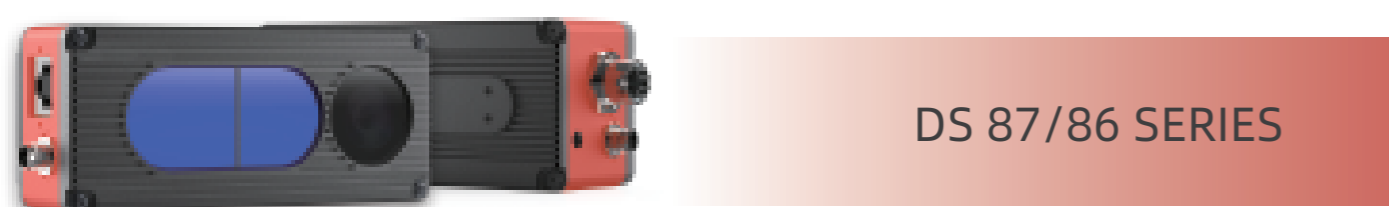
**DS SERIES**  
Based on Continuous Wave iToF

Automation Equipment >>>>

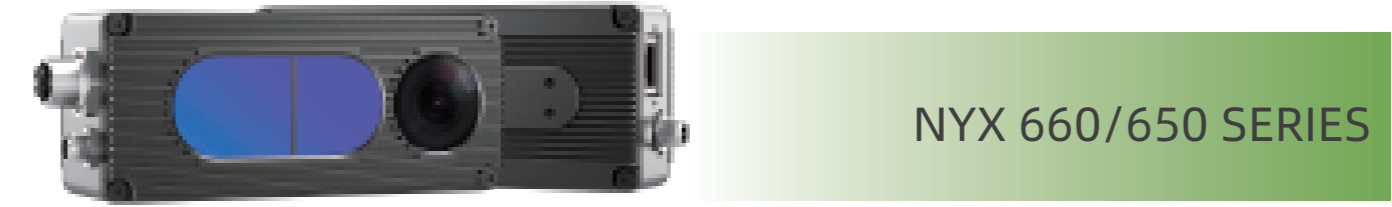


Gesture Perception >>>>





Model	DS87 Series	DS86 Series
Sensor	Sony DepthSense ToF CMOS	
Illumination	940nm VCSEL * 2	
ToF Resolution/ Frame rate	640*480, Max.15fps	
ToF HDR Mode	Supported with Max. 10fps	
ToF FOV	67°(H)*50°(V)	
RGB Camera	1600*1200, Global Shutter, 70° (H)*50° (V)	
Output Format	16bit (Depth) + 8bit (IR) + JPEG (RGB)	
Transmission Technology	1000Mbps Ethernet	
Physical Connection	Aviation Plug x 2	RJ45
Power Supply	12V~24V DC or PoE+	12V~24V (DC)
Accuracy	<1%	
Working Range	0.15m to 5m	
Working Temperature	-20° C to +50° C	
Operation System & Platform	Windows/Linux/Arm Linux/ROS1/ROS2	
SDK	C/C++/Python	
Enclosure Rating	IP67	IP42
Conformity	CE, FCC, FDA	



Model	NYX660 Series	NYX650 Series
Sensor	Nuvoton Depth Sense ToF CMOS (Originally Panasonic Semiconductor)	
Illumination	940nm VCSEL*2	
ToF Resolution/Frame rate	640*480, Max.30fps	
ToF FOV	70°(H)*50°(V)	
RGB Camera	1600*1200, Global Shutter, 71° (H)*55° (V)	
Output Format	16bit (Depth) + 8bit (IR) + JPEG (RGB)	
Transmission Technology	1000Mbps Ethernet	
Physical Connection	Aviation Plug x 2	RJ45
Power Supply	12V~24V DC or PoE+	12V~24V (DC)
Accuracy	<2%*	
Working Range	0.3m ~ 4.5m*	
Working Temperature	-20° C to +50° C	
Operation System & Platform	Windows7/8/10/11/ Linux/Arm Linux/ROS1/ROS2	
SDK	C/C++/Python	
Enclosure Rating	IP67	IP42
Conformity	CE, FCC, FDA	

